

A photograph of a couple relaxing on a beach. They are sitting in wooden lounge chairs with white fabric covers, facing away from the camera towards the ocean. A large, open beach umbrella with a wooden frame and white pole is positioned to the left. The background shows the ocean with gentle waves and a clear blue sky.

DOES YOUR COVER HAVE YOU COVERED?

THE TRUTH
ABOUT SOLUTION
DYED FABRICS

WHAT MAKES THE TOP NOTCH™ FAMILY OF FABRICS *different*



You are probably looking at solution dyed fabrics because you want high color retention. But what good is the fabric still holding its color if it stretches, sags, tears, abrades or just plain has holes in it! Don't settle for just colorfastness. At Marlen Textiles, we have taken our experience making Top Gun™, which is one of the strongest fabrics on the market, and combined it with solution dyed technology to bring you the best of both worlds: a fabric that will retain its color and last a long time.

ACRYLIC VS. POLYESTER

The best known solution dyed fabrics on the market are made of acrylic, but that doesn't make them the best. Acrylic is inherently weaker than polyester, with polyester having both a higher specific gravity and tenacity strength. This results in significantly higher tensile and tear strengths, along with much better abrasion resistance. The polyester used in the Top Notch™ family of products is a filament yarn (one continuous strand). Acrylic is a staple yarn, which is made up of lots of small pieces put back together. This makes Top Notch™ polyester even stronger.



However, not all polyester yarns and weaves are created equal. Some other polyester fabrics on the market are constructed in a way that provides inferior tear strength and abrasion resistance compared to Top Notch™.

Also, don't be fooled by the talk that "polyester won't last". In the old days, that was people referring to coated polyester fabrics losing their color. That's not true anymore. If polyester didn't last, why are most of the sewing threads made from a form of polyester? And why is no one making acrylic thread?

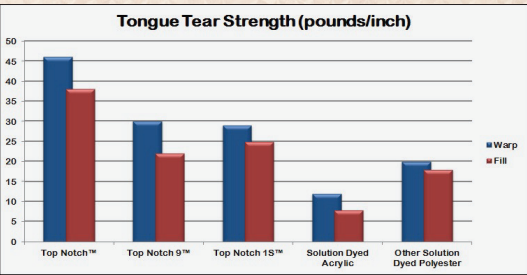
STRENGTH

Tongue Tear:

You want a cover that won't rip, so tear strength should be of critical importance. Most covers, tops, and awnings will see significant stress, which can lead to tearing. The Top Notch™ solution dyed family of products are the strongest on the market. Don't believe us? Cut into a small piece of fabric and try to continue the tear in one of your acrylics. Then try it with Top Notch™. Which is harder to tear?

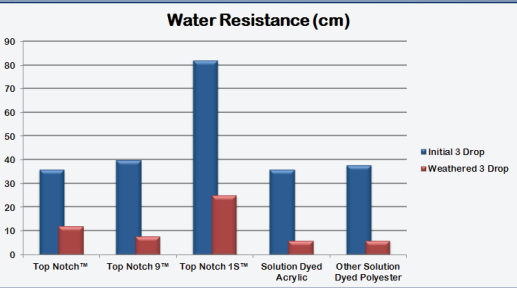
Abrasion Resistance:

When fabric rubs against a hard surface, such as tubing or framing, fabrics with a low abrasion resistance will deteriorate faster. This results in holes being worn into the fabric much quicker. Top Notch™ has a significantly higher abrasion resistance than any other breathable fabric on the market, acrylics or other polyesters. Ask to see an abrasion comparison sheet.



WATER RESISTANCE

You are buying a fabric to keep water out. So when you pick the fabric, it is best to have one with a high water resistance. A common test in the industry to determine a fabrics water resistance is the "3 Drop Test", which continuously raises a water column over the fabric until three drops have permeated through the fabric. The higher the water column is raised, the more pressure is exerted. So, the higher the number the more water resistant the fabric is. Take a look at the chart and see how the Top Notch™ family of products compares to other common solution dyed fabrics.



COLOR FADE RESISTANCE

You picked a solution dyed fabric so it would retain its color. Solution dyed polyester is made with the color blended into the liquid polymer when the yarn is spun, same as with solution dyed acrylics. This results in uniform coloring throughout the entire cross section of the yarn, not just on the surface. Because of this, and the fact that UV inhibitors are added, solution dyed polyester fabric retains its color effectively. So much so that Marlen Textiles offers a full warranty (not prorated) against excessive fading.



STRETCH & SAG

Dimensional stability is key for performance, appearance, and longevity. You want a fabric that retains its shape, even under pressure. A number of popular solution dyed fabrics on the market stretch and sag quite a bit. Some fabrics even grow when they get wet, meaning that just having moisture on the fabric causes the fibers to get longer, resulting in the fabric stretching. This is commonly known as "morning sickness". Once the fabric has stretched, it will have a tendency to puddle, as it creates a low point for the water to settle into. If too much water collects, that puts even more pressure on the fabric, forcing the pores to open even more, increasing the likelihood of leaking. You use a fabric to keep water out, so why pick one that allows water to get in? The Top Notch™ family of products has excellent dimensional stability and will help avoid stretching, sagging, puddling, and eventually leaking.



WEATHER RESISTANCE

You use the fabric to be protected from Mother Nature. This includes sun, rain, wind, snow, sleet, hail, etc. Because of this punishment, all fabrics will deteriorate over time, but not all fabrics deteriorate at the same rate. Some people may tell you that polyester degrades very fast. An important fact is that Top Notch™ is still stronger after nearly 4 years of Southern Florida exposure than when the most popular acrylic is brand new!



TOP NOTCH™ Family Is Best

As you can see, the Top Notch™ family of products outperforms other solution dyed fabrics on the market. Whether you need a 9 ounce or 11 ounce fabric, or even a 7.5 ounce with a clear backcoat, we have you covered. Superior abrasion resistance, tear strength, dimensional stability, or water resistance, there is nothing better than Top Notch™, Top Notch 9™ or Top Notch 1S™ for your solution dyed fabric needs. Find out why more people are realizing the truth about solution dyed fabrics.

PROPERTY	TOP NOTCH™	TOP NOTCH 9™	TOP NOTCH 1S™	SOLUTION DYED ACRYLIC*	OTHER SOLUTION DYED POLYESTER
<i>Width (in)</i>	60	60	60	60	60
<i>Weight (oz/sq yd)</i>	11.5	9.0	7.5	9.0	8.0
<i>Tensile Strength (lb/in), Warp x Fill</i>	500+ x 305	500+ x 300	320 x 255	285 x 185	490 x 390
<i>Initial Tongue Tear Strength (lb/in), Warp x Fill</i>	46 x 38	30 x 22	29 x 25	12 x 8	20 x 18
<i>Weathered Tongue Tear Strength (lb/in), Warp x Fill</i>	16.6 x 10.5	10.0 x 5.1	7.1 x 4.9	5.6 x 2.2	5.1 x 2.0
<i>Initial 3 Drop Rating (cm)</i>	36	40	82	36	38
<i>Weathered 3 Drop Rating (cm)</i>	12	8	25	6	6
<i>Dimensional Stability (%), Warp x Fill</i>	0.3 x 0	0.3 x 0	0.5 x 0.5	2.5 x 1.0	0.3 x 0
<i>Relative Abrasion Resistance</i>	6.0	6.0	16.0	1.0	1.2

Weathered data is after exposure in a weatherometer, simulating 3+ years Southern Florida exposure.

*Data shown is the average from testing commonly known fabrics.

Marlen Textiles

(573) 237-4444 | Fax (573) 237-4491
www.marlentextiles.com | info@marlentextiles.com

TOP NOTCH

TOP NOTCH 9

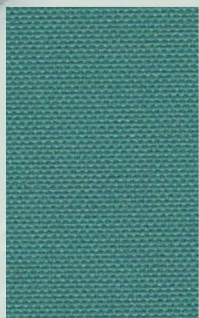
TOP NOTCH 1S



Acrylic Coated Polyester



494 Caribbean Blue



484 Aquamarine



490 Teal



497 Turquoise



488 Forest Green



493 Lakeside Blue



480 Royal Blue



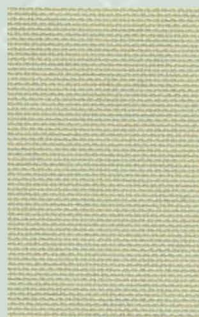
498 Harbor Blue



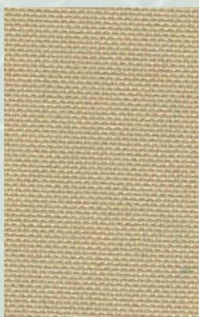
483 Red*



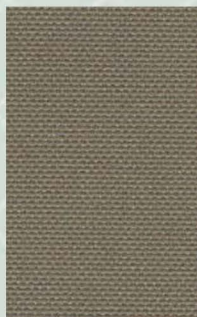
496 Burgundy*



499 Birch



426 Sand



408 Taupe



491 Brown



492 Charcoal



489 Silver Gray



449 Black



487 White



Marlen Textiles

* Premium Color, subject to change



Odyssey is an acrylic coated, 100% woven polyester fabric (300 denier) with a clear backcoat. As the flagship product in the Odyssey family of economical coated fabrics, it is characterized by excellent strength, durability, tear and abrasion resistance, dimensional stability, UV and mildew resistance at an economical price point. Odyssey is a light weight fabric that provides long lasting durability without the higher cost and weight of heavier fabrics. Odyssey can be used for outdoor applications such as marine tops, trailer covers, gazebos, canopies, tarps, playground equipment covers, BBQ grill covers, patio furniture covers, stools, cots, luggage, bags, and many other useful applications.

Odyssey, great value at a great price.

TECHNICAL DATA

Characteristic	TOP NOTCH®	TOP NOTCH 9®	TOP NOTCH 1S®	TOP GUN®	TOP GUN 9®	TOP GUN 1S®	ODYSSEY®
Width, inches	60	60 & 2 meters*	60	62 & 2 meters*	62	60	64
Roll Size, yards	50	50	50	50	50	50	75
Weight, oz/yard ²	11.5	9.0	7.5	11.5	9.0	9.0	6.5
Tensile (lb/in), Warp x Fill	500+ x 305	500+ x 300	320 x 255	500+ x 388	360 x 250	480 x 340	297 x 220
Tongue Tear (lb/in), Warp x Fill	46 x 38	30 x 22	29 x 25	40 x 32	30 x 29	38 x 30	22 x 20
Spray Rating	100	100	100	90+	90+	90+	90+
3 Drop Rating (cm)	36	40	82	76	71	76	51
Warranty Period (years)	5	5	3	5	4	5	3
Breathability (g/m ² /24 hr.)	645	700	260	116	100	180	87
Shrinkage (%), Warp x Fill	0 x 0	0 x 0	<1 x 0	0 x <1	0 x 0	0 x 0	0 x <1
Stretch (%), Warp x Fill	<1 x <1	<1 x <1	<1 x <1.5	<1 x <1	<1 x <1	<1 x <1	<1 x <1

*Select Colors

Marlen Textiles

500 Orchard Street New Haven, MO 63068
(800) 343-6326 (573) 237-4444 Fax (573) 237-4491
www.marlentextiles.com

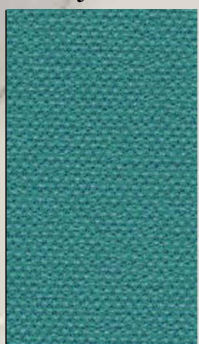
Contact Marlen Textiles for specific details of warranty coverage.
9201511



Acrylic Coated Polyester



463 Caribbean Blue



462 Aquamarine



478 Teal



466 Turquoise



479 Forest Green



464 Royal Blue*



473 Harbor Blue



474 Navy Blue



467 Sea Gull Gray



458 Charcoal



471 Onyx Black



468 Arctic White



472 Birch



461 Sand



470 Buckskin Tan



465 Hemp Beige



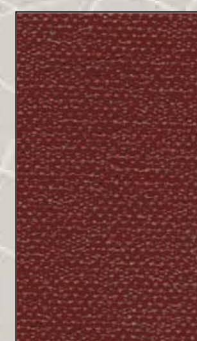
459 Taupe



469 Chocolate Brown



477 Sunset Red*



476 Burgundy*



Marlen Textiles

* Premium Color, subject to change



Top Gun is an acrylic coated, 100% woven polyester fabric (600 denier) utilizing a proprietary formula and process to coat the top and bottom, allowing the fabric to be completely reversible. As the flagship product in the Top Gun family of premium coated fabrics, it is characterized by excellent strength, durability, tear and abrasion resistance, dimensional stability, UV and mildew resistance, making Top Gun the ultimate coated fabric. Top Gun can be used for many outdoor applications such as marine tops, trailer covers, gazebos, canopies, tarps, playground equipment covers, BBQ grill covers, patio furniture, and many other useful applications.

Top Gun, often imitated, never duplicated.

TECHNICAL DATA

Characteristic	TOP NOTCH®	TOP NOTCH 9®	TOP NOTCH 1S®	TOP GUN®	TOP GUN 9®	TOP GUN 1S®	ODYSSEY®
Width, inches	60	60 & 2 meters*	60	62 & 2 meters*	62	60	64
Roll Size, yards	50	50	50	50	50	50	75
Weight, oz/yard ²	11.5	9.0	7.5	11.5	9.0	9.0	6.5
Tensile (lb/in), Warp x Fill	500+ x 305	500+ x 300	320 x 255	500+ x 388	360 x 250	480 x 340	297 x 220
Tongue Tear (lb/in), Warp x Fill	46 x 38	30 x 22	29 x 25	40 x 32	30 x 29	38 x 30	22 x 20
Spray Rating	100	100	100	90+	90+	90+	90+
3 Drop Rating (cm)	36	40	82	76	71	76	51
Warranty Period (years)	5	5	3	5	4	5	3
Breathability (g/m ² /24 hr.)	645	700	260	116	100	180	87
Shrinkage (%), Warp x Fill	0 x 0	0 x 0	<1 x 0	0 x <1	0 x 0	0 x 0	0 x <1
Stretch (%), Warp x Fill	<1 x <1	<1 x <1	<1 x <1.5	<1 x <1	<1 x <1	<1 x <1	<1 x <1

*Select Colors

Marlen Textiles

500 Orchard Street New Haven, MO 63068
(800) 343-6326 (573) 237-4444 Fax (573) 237-4491
www.marlentextiles.com

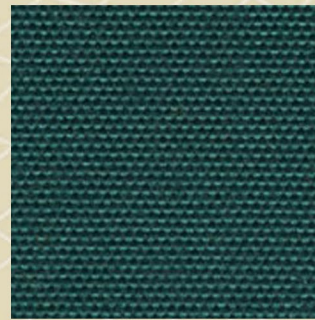
Contact Marlen Textiles for specific details of warranty coverage.
9201511

TOP NOTCH®

Solution Dyed Polyester



594 Pacific Blue*



579 Forest Green



563 Blue



574 Commander Navy*



570 Tan



559 Taupe



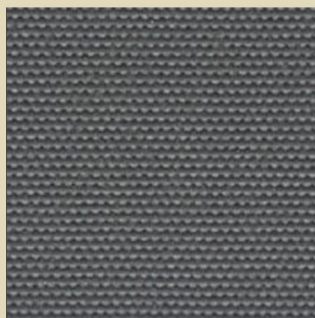
577 Red*



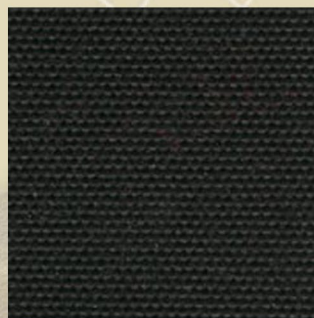
576 Burgundy*



567 Silver Gray



558 Charcoal



571 Black



568 White



Marlen Textiles

* Premium Color, subject to change



Top Notch is a 100% solution dyed polyester fabric with a fluorocarbon finish, resulting in a fabric that is breathable, reversible, water repellent and has a luxurious hand. As the flagship product in the Top Notch family of premium solution dyed fabrics, it will provide exceptional colorfastness. Top Notch is the ultimate fabric that combines strength, abrasion resistance, dimensional stability and UV resistance. Top Notch can be used for many outdoor applications such as marine tops, trailer covers, awnings, gazebos, canopies, patio furniture and anywhere that a reversible and breathable fabric is needed.

Top Notch, raising the bar on solution dyed fabrics.

TECHNICAL DATA

Characteristic	TOP NOTCH®	TOP NOTCH 9®	TOP NOTCH 1S®	TOP GUN®	TOP GUN 9®	TOP GUN 1S®	ODYSSEY®
Width, inches	60	60 & 2 meters*	60	62 & 2 meters*	62	60	64
Roll Size, yards	50	50	50	50	50	50	75
Weight, oz/yard ²	11.5	9.0	7.5	11.5	9.0	9.0	6.5
Tensile (lb/in), Warp x Fill	500+ x 305	500+ x 300	320 x 255	500+ x 388	360 x 250	480 x 340	297 x 220
Tongue Tear (lb/in), Warp x Fill	46 x 38	30 x 22	29 x 25	40 x 32	30 x 29	38 x 30	22 x 20
Spray Rating	100	100	100	90+	90+	90+	90+
3 Drop Rating (cm)	36	40	82	76	71	76	51
Warranty Period (years)	5	5	3	5	4	5	3
Breathability (g/m ² /24 hr.)	645	700	260	116	100	180	87
Shrinkage (%), Warp x Fill	0 x 0	0 x 0	<1 x 0	0 x <1	0 x 0	0 x 0	0 x <1
Stretch (%), Warp x Fill	<1 x <1	<1 x <1	<1 x <1.5	<1 x <1	<1 x <1	<1 x <1	<1 x <1

Marlen Textiles

*Select Colors

500 Orchard Street New Haven, MO 63068
(800) 343-6326 (573) 237-4444 Fax (573) 237-4491
www.marlentextiles.com

Contact Marlen Textiles for specific details of warranty coverage.
9201511

TOP NOTCH[®] 1S

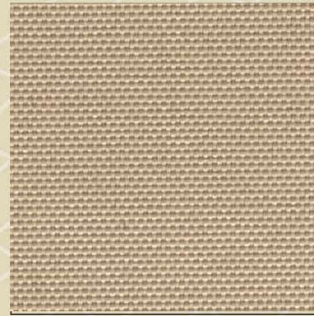
Solution Dyed Polyester



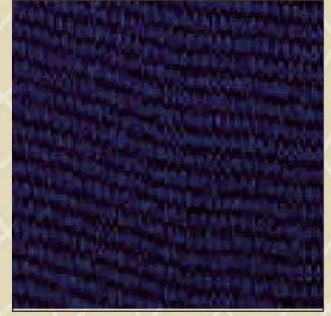
694 Caribbean Blue



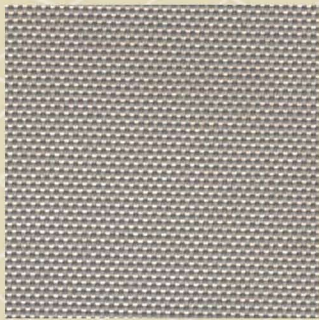
615 Cappuccino



642 Tan



633 Captain Navy*



648 Silver Gray



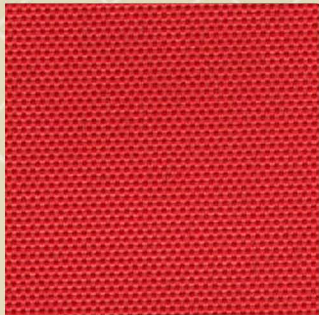
649 Black



680 Pacific Blue*



674 Navy*



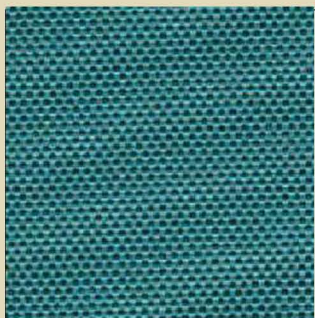
683 Red*



688 Forest Green



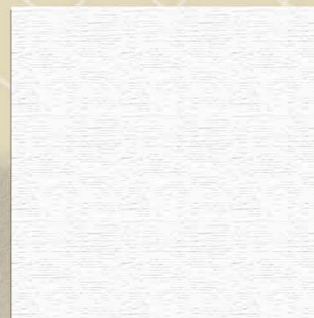
692 Charcoal



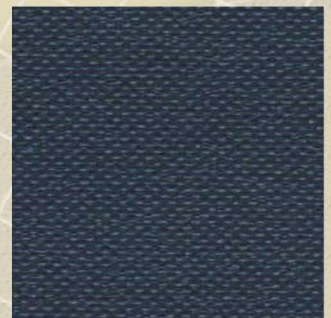
690 Teal



696 Burgundy*



687 White



698 Harbor Blue*

Marlen Textiles



* Premium Color, subject to change



Top Notch 1S is a 100% solution dyed polyester fabric (600 denier) with a clear backcoat. As part of the Top Notch family of premium solution dyed fabrics, it will provide exceptional colorfastness. It is characterized by excellent strength, durability, water resistance, tear resistance, abrasion resistance, dimensional stability, UV resistance and mildew resistance. Top Notch 1S is truly an all purpose fabric that can be used for many outdoor applications such as marine tops and covers, gazebos, playground equipment covers, canopies, tarps, BBQ grill covers, patio furniture covers and many other useful applications.

Top Notch 1S, the all purpose choice.

TECHNICAL DATA

Characteristic	TOP NOTCH®	TOP NOTCH 9®	TOP NOTCH 1S®	TOP GUN®	TOP GUN 9®	TOP GUN 1S®	ODYSSEY®
Width, inches	60	60 & 2 meters*	60	62 & 2 meters*	62	60	64
Roll Size, yards	50	50	50	50	50	50	75
Weight, oz/yard ²	11.5	9.0	7.5	11.5	9.0	9.0	6.5
Tensile (lb/in), Warp x Fill	500+ x 305	500+ x 300	320 x 255	500+ x 388	360 x 250	480 x 340	297 x 220
Tongue Tear (lb/in), Warp x Fill	46 x 38	30 x 22	29 x 25	40 x 32	30 x 29	38 x 30	22 x 20
Spray Rating	100	100	100	90+	90+	90+	90+
3 Drop Rating (cm)	36	40	82	76	71	76	51
Warranty Period (years)	5	5	3	5	4	5	3
Breathability (g/m ² /24 hr.)	645	700	260	116	100	180	87
Shrinkage (%), Warp x Fill	0 x 0	0 x 0	<1 x 0	0 x <1	0 x 0	0 x 0	0 x <1
Stretch (%), Warp x Fill	<1 x <1	<1 x <1	<1 x <1.5	<1 x <1	<1 x <1	<1 x <1	<1 x <1

*Select Colors

Marlen Textiles

500 Orchard Street New Haven, MO 63068
(800) 343-6326 (573) 237-4444 Fax (573) 237-4491
www.marlentextiles.com

Contact Marlen Textiles for specific details of warranty coverage.
9201511