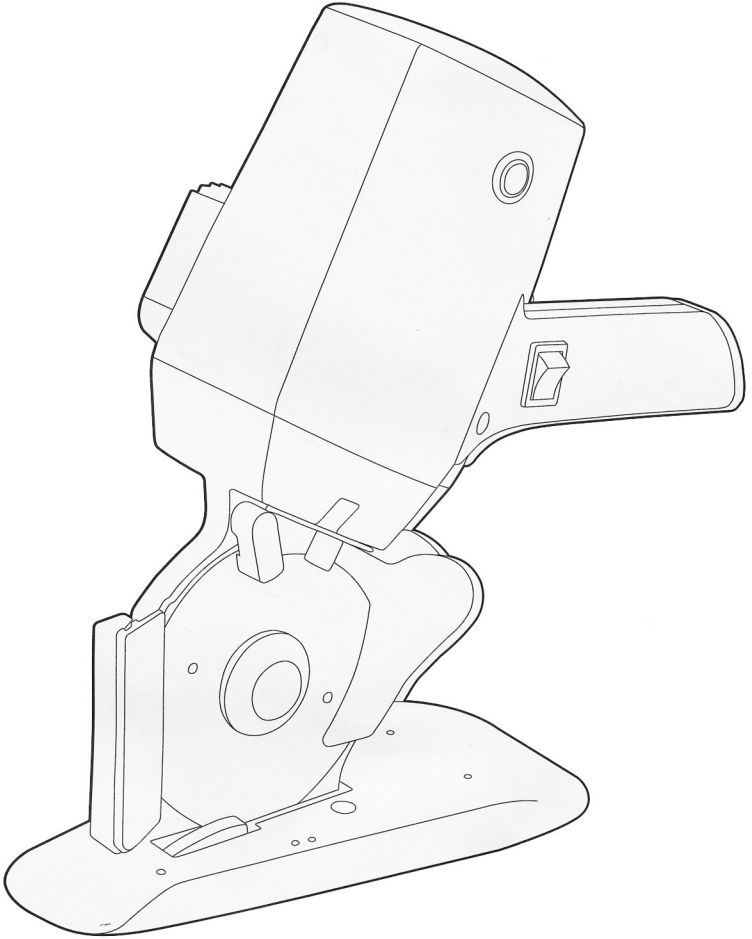


# TRIDEN

**DISTRIBUTORS**



## 1500FR

ELECTRIC CLOTH CUTTER

INSTRUCTION MANUAL

# INSTRUCTIONS

Before cutting, connect the power cord to the machine and sharpen the knife-edge by pushing the spring loaded projection-grinding switch (B) several times.

## A. Lubrication

1. Every 50 hours: Add a small quantity of grease through the grease cup and turn the cap (A) in.
2. Every 10-20 hours: Add oil to knife oiler (D) until oil comes in contact with the surface of the knife's edge. *We recommend TDL*

## B. Adjusting the Sharpener

1. When the grinding wheel shows signs of wear, loosen the stop on the grinder arm (J) and adjust the sharpener's position so that the grinding wheel maintains proper contact with the knife-edge. *sewing machine oil 13035.*

## C. Replacing the Grinding Wheel

\* See *Grinding Wheel Replacement Guide*

## D. Replacing the Knife

1. Place the knife guard (E) to its upward position. *TDL # 13985*
2. Pull the spring-loaded knife oiler (D) and turn to the right to arrow indication.
3. Remove safety plate (I) releasing the lock nut (H).
4. Remove the knife lock nut (C) by turning it to the left with the knife removal key.
5. Remove the knife.
6. Be sure the front face of the blade is marked when replacing the knife.
7. Adjust the position of the sharpener (K) after each knife replacement.

## E. Replacement of Carbon Brush

1. Excess wear of the carbon brush will cause motor trouble. Carbon brush must be replaced when it wears down to 5mm. *TDL # 13984*
2. Remove the carbon brush cap (G) to replace the carbon brush.
3. Always replace right and left carbon brushes simultaneously.

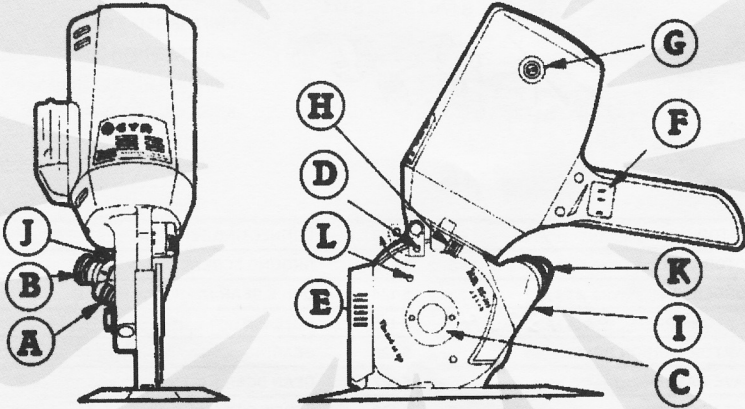
**CAUTION:** For safety purposes retain the knife guards (E) at the lowest possible location while the machine is not in use. Also keep the guard as close as possible to the fabric while cutting.

# SPECIFICATIONS

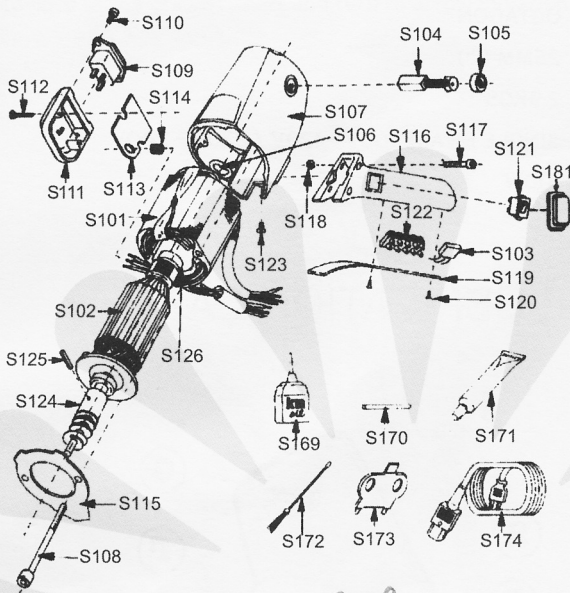
TDL-100

KNIFE SIZE	100MM
KNIFE SHAPE:	OCTAGON
CUTTING CAPACITY:	25MM (1")
NET WEIGHT:	2.9KGS
VOLTAGE:	SINGLE PHASE 100V - 120V / 220V - 240V
POWER:	100W

## OPERATION - LUBRICATION CARE



# MOTOR ASSEMBLY & ACCESSORIES



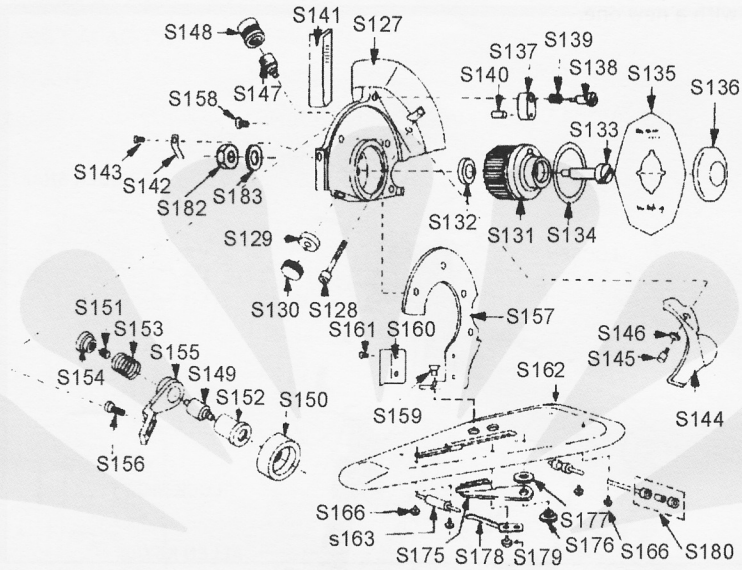
## OTHER STANDARD ACCESSORIES:

- KNIFE (S135) - 1 PC.
- CARBON BRUSH (S104) - 1 SET
- GRINDING WHEEL (S150) - 1 PC.
- KNIFE OIL FELT (S140) - 1 PC.

S-101	STATOR
S-102	ROTOR
S-103	CONDENSER
S-104	CARBON BRUSH <i>PAIR 13984</i>
S-105	CAP FOR CARBON BRUSH
S-106	WAVE WASHER
S-107	MOTOR COVER
S-108	SCREW FOR STATOR
S-109	TERMINAL
S-110	SCREW FOR TERMINAL
S-111	TERMINAL BOX
S-112	SCREW FOR T.BOX
S-113	TERMINAL PLATE
S-114	RUBBER BUSHING
S-115	AIR GUIDE
S-116	DRIVE HANDLE
S-117	SCREW FOR HANDLE
S-118	NUT FOR HANDLE
S-119	COVER FOR HANDLE
S-120	SCREW FOR COVER
S-121	SWITCH

S-122	CONNECTING TERMINAL
S-123	GROUND SCREW
S-124	DRIVE GEAR
S-125	ROLL PIN
S-126	BEARING
S-127	GEAR BOX
S-128	SCREW FOR G.BOX
S-129	DRIVE GEAR METAL
S-130	COVER FOR METAL
S-131	KNIFE GEAR
S-132	WASHER FOR GEAR
S-133	SCREW FOR GEAR
S-134	RING FOR GEAR
S-135	KNIFE (8-SIDED) <i>13985</i>
S-136	LOCK NUT FOR KNIFE
S-137	KNIFE OILER
S-138	SCREW FOR OILER
S-139	SPRING FOR OILER
S-140	OIL FELT
S-141	KNIFE GUARD
S-142	SPRING FOR GUARD

# STANDARD & BASE ASSEMBLY



S-143	SCREW FOR SPRING
S-144	SAFETY PLATE
S-145	SCREW FOR PLATE
S-146	SPRING WASHER FOR PLATE
S-147	GREASE CUP
S-148	CAP FOR GREASE CUP
S-149	GRINDER SHAFT
S-150	EMERY WHEEL
S-151	GRINDER SPRING
S-152	GRINDER COLLAR
S-153	SPRING FOR COLLAR
S-154	SHARPENING SWITCH
S-155	GRINDER ARM
S-156	SCREW FOR GRINDER ARM
S-157	STANDARD
S-158	SCREW FOR STANDARD (UPSIDE)
S-159	SCREW FOR STANDAD(BOTTOM)
S-160	GUIDE PLATE
S-161	SCREW FOR GUIDE PLATE
S-162	BASE PLATE

S-163	FRONT ROLLER
S-164	ROLLER SHAFT (FRONT)
S-165	ROLLER SHAFT(REAR)
S-166	SCREW FOR ROLLER SHAFT
S-169	OILER
S-170	LOCK SHAFT
S-171	GREASE
S-172	CLEANING BRUSH
S-173	WRENCH
S-174	CODE COMPLETE WITH EARTH
S-175	LOWER BLADE
S-176	SCREW FOR LOWER BLADE
S-177	WASHER FOR LOWER BLADE
S-178	PRESSURE SPRING FOE LOWER BLADE
S-179	SCREW FOR PRESSURE SPRING
S-180	REAR ROLLER SET
S-181	SWITCH CAP
S-182	NUT FOR KNIFE GEAR SCREW
S-183	WASHER FOR KNIFE GEAR SCREW

# GRINDING WHEEL REPLACEMENT GUIDE

Hold the grinding wheel by hand. Insert the attached lock shaft to the hole provided in the grinder shaft and turn to arrow indiation. Remove used wheel and replace with a new one.

